

BATTERY INSTALLATION

- To change batteries, unscrew (counter-clockwise) the end cap where the magnetic base is located
- Remove old batteries and dispose of properly
- Insert 3 new AA batteries, positive end first as show in the diagram on the end cap
- Reattach the end cap by turning clockwise until tightened



LIGHTING INSTRUCTIONS

- Press button 1x to activate flashlight (top light)
- Press 2x to activate work light
- Press 3x to activate red light
- Press 4x to activate red hazard flasher
- Press again to turn OFF

(Note: Leave any mode On for 8 seconds or longer and the next press of the button turns light Off)



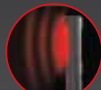
Top Light
120 Lumens
12 Hours
44 Meters



Work Light
400 Lumens
4.5 Hours
27 Meters



Red Light
40 Lumens
20 Hours
7 Meters



Red Flash
40 Lumens
40 Hours
7 Meters

DIRECT TO RED INSTRUCTIONS

- Press and hold button for 3 seconds to activate red light
- Press again to turn OFF

DIMMABLE BEAM

Each light mode is fully dimmable. Hold button for 1.5 seconds to activate dimming function.

- Light will dim from 100% to 30% over 3 seconds
- Light will flash quickly when it reaches 30% or 100% to indicate it has reached the lowest or highest light output
- Release button at any time to achieve desired brightness
- Light will continue to dim/brighten between 100% and 30% until button is released

MEMORY POWER SETTING

Larry BOSS is equipped with memory settings for each light mode. To program memory settings, start in the OFF position.

- Double-tap the button to activate Memory Power Setting. Flashlight (top) will activate
- Follow Dimming Instructions to adjust light to desired brightness
- Press button again to move to next setting. Light will cycle through each light mode sequentially
- Set each light mode at desired brightness level
- If 100% brightness is desired amongst light modes, simply press button to move to the next mode
- Press again to turn OFF

To reprogram, simply repeat the previous steps.

TELESCOPING MAGNETIC GRABBER

- Push up on the red slide to reveal the Magnetic Grabber
- Extend to desired length
- Top portion of Grabber bends and flexes in any direction
- When done, push Grabber down to conceal

